

THIS MAP WAS PREPARED UTILIZING COMPUTER AIDED DRAFTING (C.A.D.) TECHNIQUES AND IS BASED UPON THE PREVIOUSLY APPROVED MAPS OF FEBRUARY 25, 1954 BY CHARLES P. CAULFIELD. THE ORIGINALLY APPROVED LINENS ARE ON FILE WITH THIS OFFICE.

TAX MAP

BOROUGH OF WESTVILLE

GLOUCESTER COUNTY, NEW JERSEY
SCALE: 1"=100' AUG. 6, 1998
CHARLES J. RIEBEL JR., P.L.S.
KEI ASSOCIATES, P.A.
80 SOUTH WHITE HORSE PIKE
BERLIN, NEW JERSEY

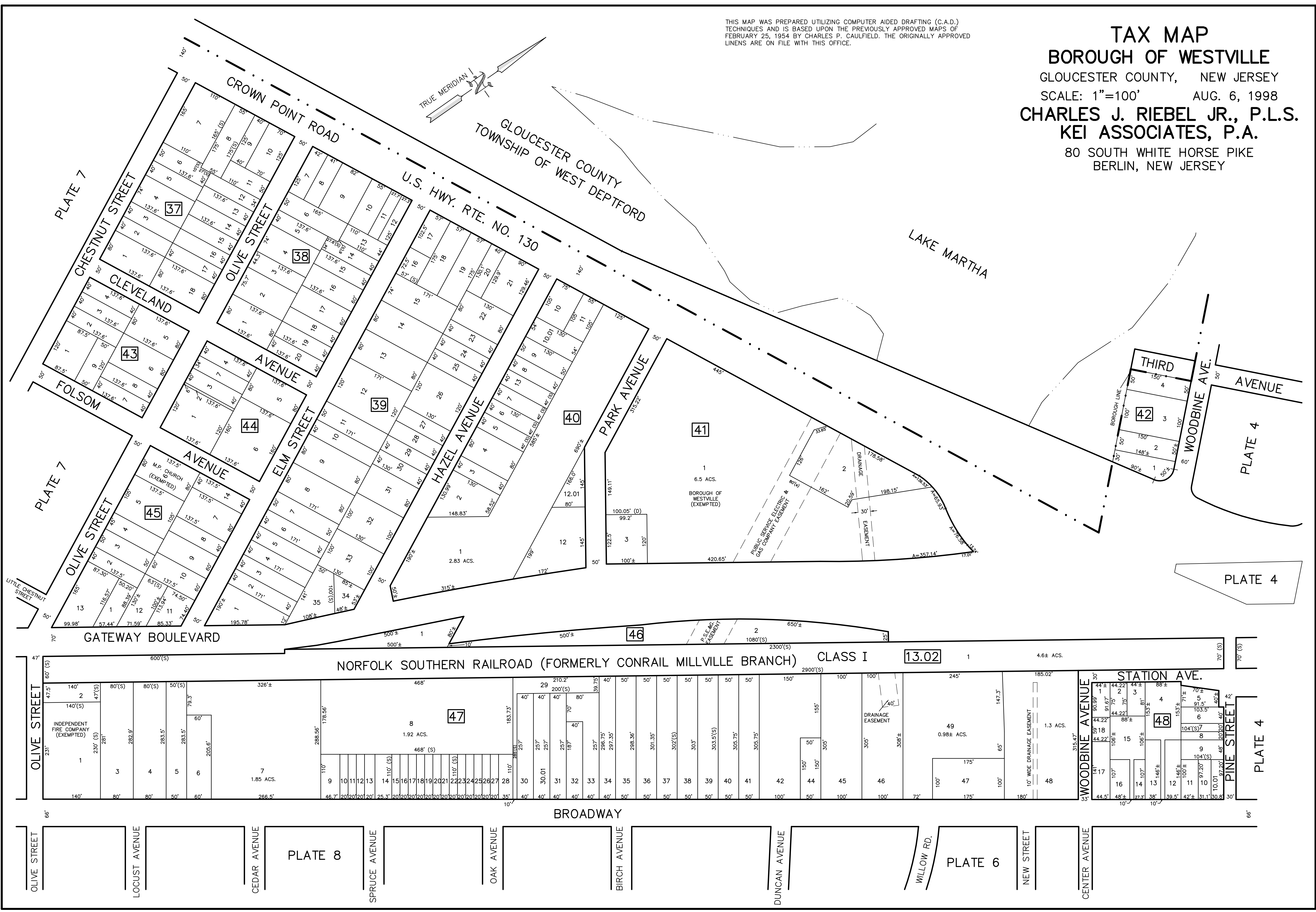
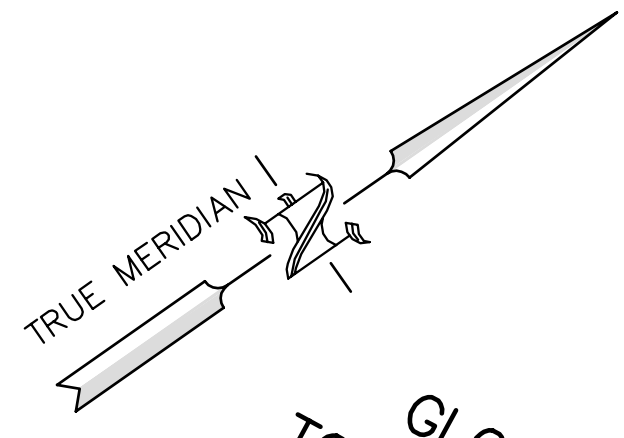


PLATE 4

PLATE 4

PLATE 8

PLATE 6