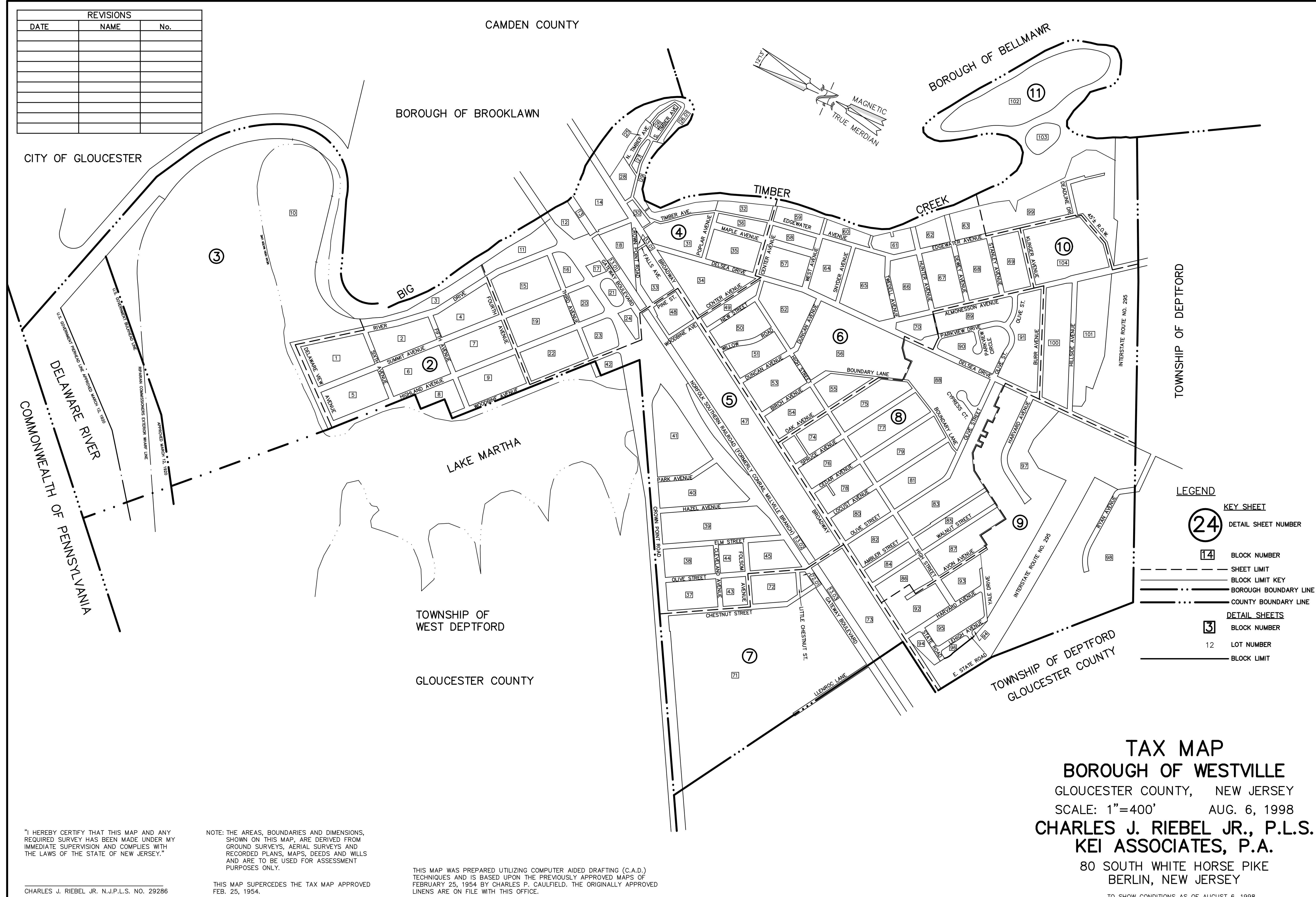


REVISIONS		
DATE	NAME	No.



LEGEND

- 24 KEY SHEET
- 14 DETAIL SHEET NUMBER
- 14 BLOCK NUMBER
- SHEET LIMIT
- BLOCK LIMIT KEY
- BOROUGH BOUNDARY LINE
- COUNTY BOUNDARY LINE
- 3 DETAIL SHEETS
- 3 BLOCK NUMBER
- 12 LOT NUMBER
- BLOCK LIMIT

TAX MAP
BOROUGH OF WESTVILLE
 GLOUCESTER COUNTY, NEW JERSEY
 SCALE: 1"=400' AUG. 6, 1998
CHARLES J. RIEBEL JR., P.L.S.
KEI ASSOCIATES, P.A.
 80 SOUTH WHITE HORSE PIKE
 BERLIN, NEW JERSEY
 TO SHOW CONDITIONS AS OF AUGUST 6, 1998.

"I HEREBY CERTIFY THAT THIS MAP AND ANY REQUIRED SURVEY HAS BEEN MADE UNDER MY IMMEDIATE SUPERVISION AND COMPLIES WITH THE LAWS OF THE STATE OF NEW JERSEY."

NOTE: THE AREAS, BOUNDARIES AND DIMENSIONS, SHOWN ON THIS MAP, ARE DERIVED FROM GROUND SURVEYS, AERIAL SURVEYS AND RECORDED PLANS, MAPS, DEEDS AND WILLS AND ARE TO BE USED FOR ASSESSMENT PURPOSES ONLY.

THIS MAP WAS PREPARED UTILIZING COMPUTER AIDED DRAFTING (C.A.D.) TECHNIQUES AND IS BASED UPON THE PREVIOUSLY APPROVED MAPS OF FEBRUARY 25, 1954 BY CHARLES P. CAULFIELD. THE ORIGINALLY APPROVED LINES ARE ON FILE WITH THIS OFFICE.

CHARLES J. RIEBEL JR. N.J.P.L.S. NO. 29286

THIS MAP SUPERCEDES THE TAX MAP APPROVED FEB. 25, 1954.